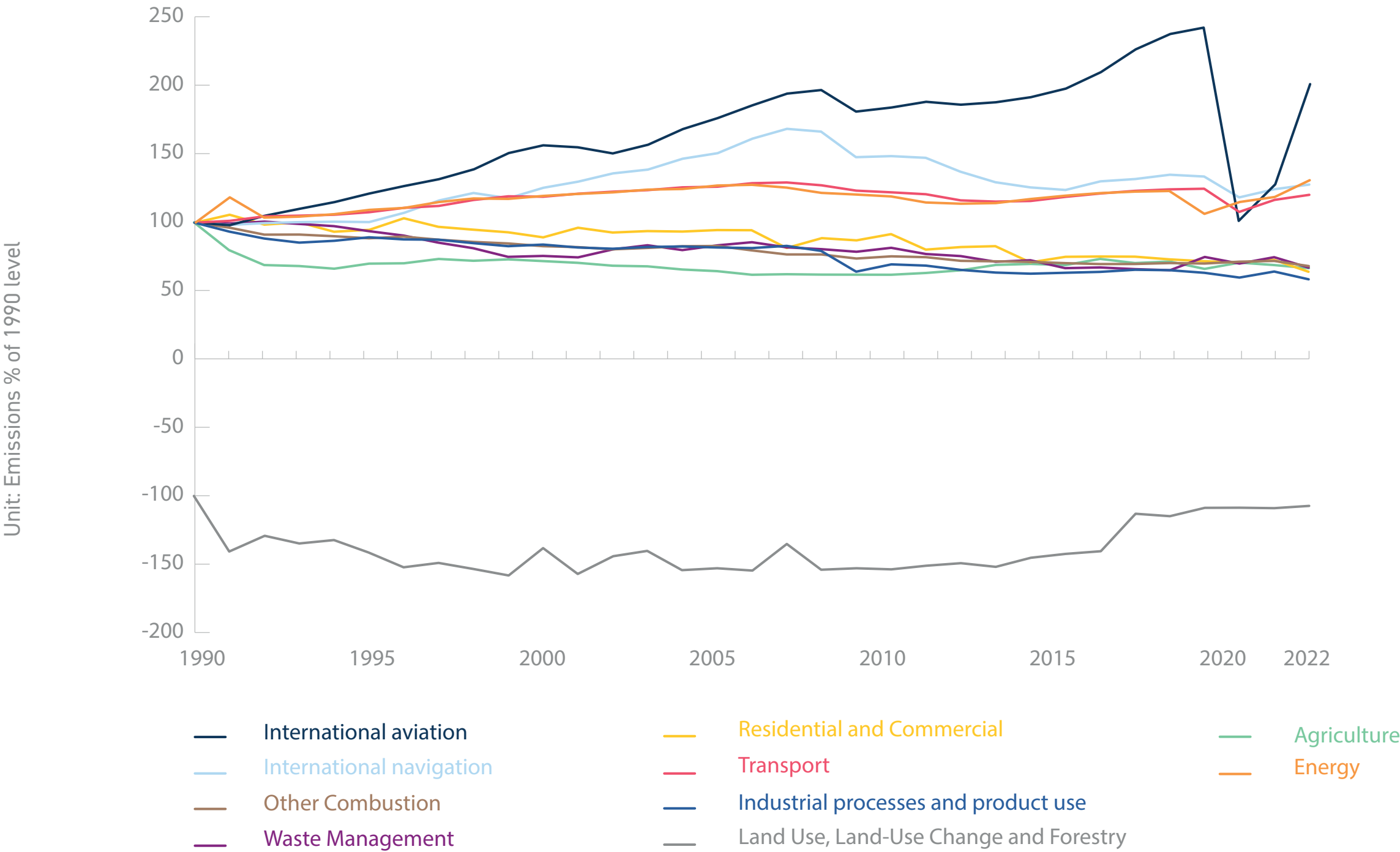


# CO<sub>2</sub> EMISSION TREND BY SECTOR IN THE EU-27

Source: European Environmental Agency



CO<sub>2</sub> emissions per sector have generally been declining since 2007. CO<sub>2</sub> emissions from transport steadily decreased between 2008 and 2015. However, since 2016, there has been an increasing trend in the CO<sub>2</sub> emissions in domestic transport, international aviation and international shipping. This increase was halted in 2020 due to global travel restrictions linked to the covid-19 pandemic but is now going back up since the restrictions were lifted. Since 1990, land use, land-use change and forestry has been offsetting less and less CO<sub>2</sub> emissions.