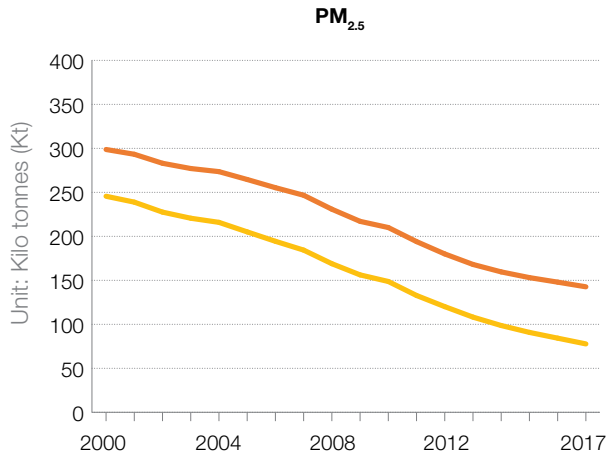
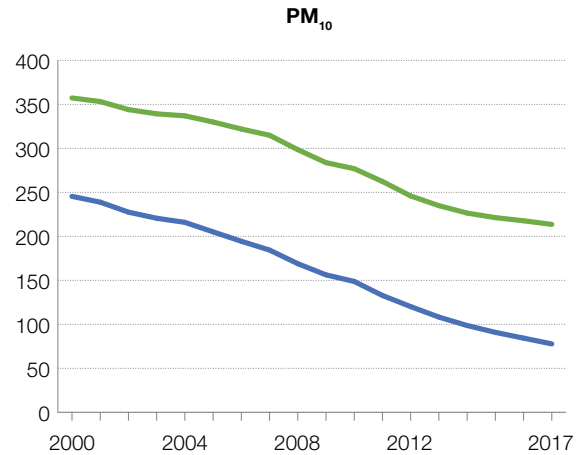


FIG.37a PM EMISSIONS FROM EXHAUST IN THE EU-28 REDUCED BY OVER 60%

Source: European Environment Agency



— PM_{2.5} Overall transport emissions
— PM_{2.5} Exhaust emissions



— PM₁₀ Overall transport emissions
— PM₁₀ Exhaust emissions

PM emissions are continuously decreasing as the result of cleaner diesel fuel, advanced engines and effective emissions control technology. With the introduction of the Euro 6

standard, modern road vehicles with diesel engines are using highly efficient filters that remove 99.9% of PM.