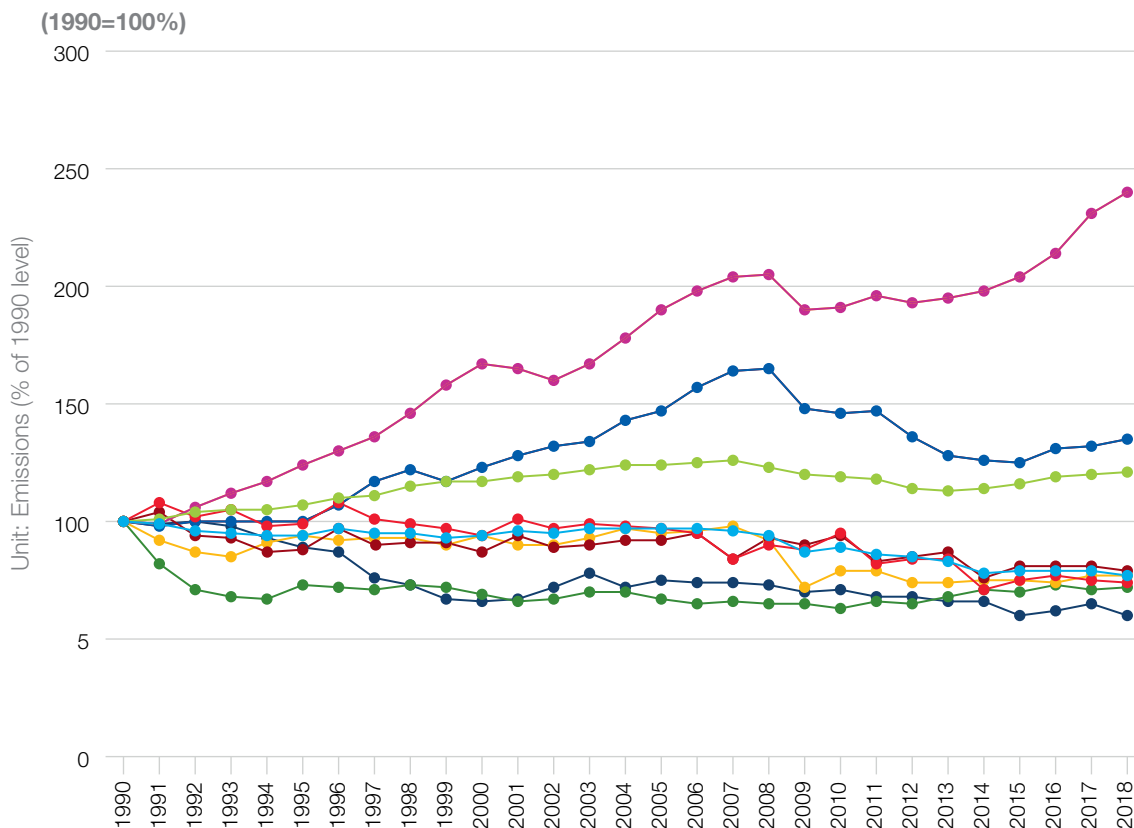


# FIG.41 CO<sub>2</sub> EMISSIONS TREND BY SECTOR IN THE EU-28

Source: European Environment Agency



- ENERGY SUPPLY
- INDUSTRY
- TRANSPORT
- RESIDENTIAL
- COMMERCIAL/INSTITUTIONAL
- AGRICULTURE
- WASTE
- INTERNATIONAL NAVIGATION
- INTERNATIONAL AVIATION

CO<sub>2</sub> emissions per sector have generally been declining since 2007. Industry's (processes and manufacturing) CO<sub>2</sub> emissions decreased sharply over the period 2007-2012 and are now respectively 30% and 38% below the 1990 levels.

CO<sub>2</sub> emissions from transport have been steadily decreasing between 2008 and 2015. However, since 2016 we have seen a minor increase due to international aviation.