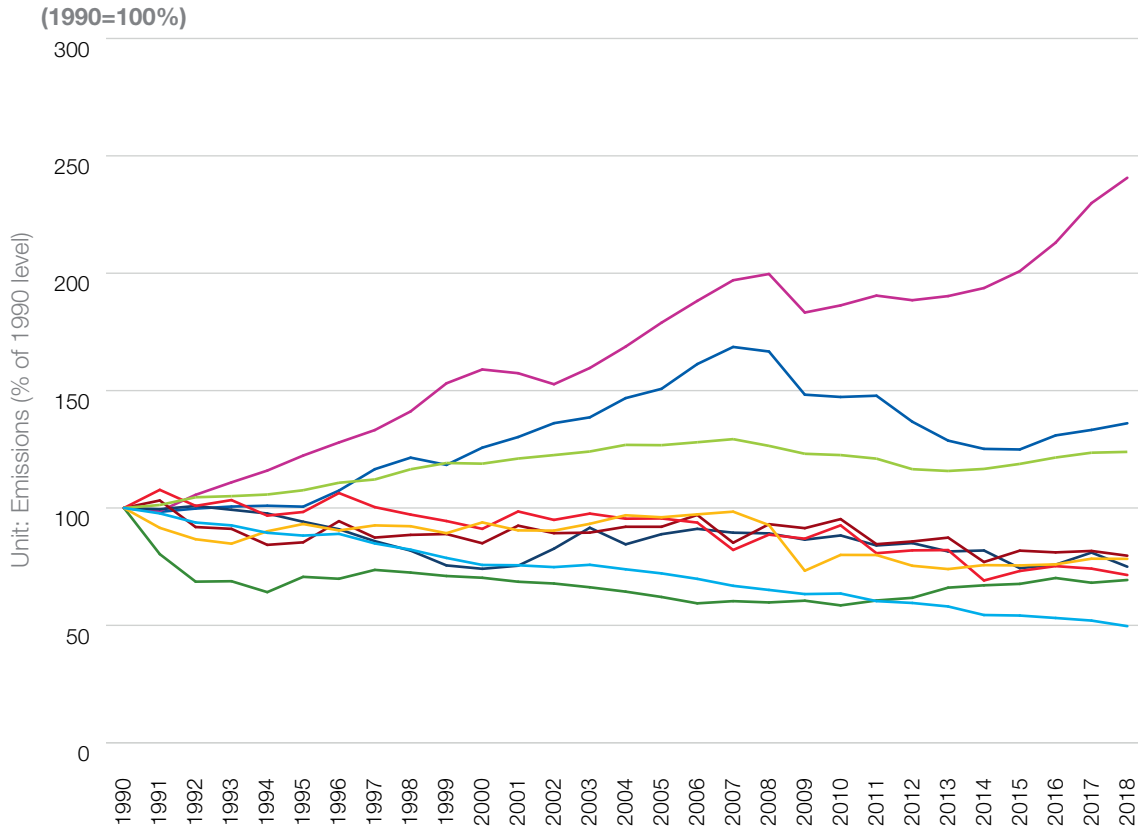


FIG.40 CO₂ EMISSIONS TREND BY SECTOR IN THE EU-27

Source: European Environment Agency



- ENERGY SUPPLY
- INDUSTRY
- TRANSPORT
- RESIDENTIAL
- COMMERCIAL/INSTITUTIONAL
- AGRICULTURE
- WASTE
- INTERNATIONAL NAVIGATION
- INTERNATIONAL AVIATION

CO₂ emissions per sector have generally been declining since 2007. Industry's (processes and manufacturing) CO₂ emissions decreased sharply over the period 2007-2012 and are now respectively 30% and 38% below the 1990 levels.

CO₂ emissions from transport have been steadily decreasing between 2008 and 2015. However, in 2016 we have seen slight increase in the CO₂ emissions in transport which is mainly due to international aviation.